

Uni-u



Uni-u has the capability and experience to assist your organisation reach its potential through innovative learning solutions and resources.

Are you getting the right results...

from your training and education dollar? Or do the following issues sound familiar:

- Trouble engaging your learners?
- Learner's lacking motivation?
- Induction and training costs too high?
- Learning outcomes not being achieved?
- Ineffective training support for your products?
- Not getting the expected ROI on your training?
- Ad hoc training systems?

With an emphasis on doing "more with less", Uni-u can help you by combining a strong focus on the learning needs of your organisation with the latest learning solutions and approaches.

Blended Learning

Blended learning is about selecting the right mix of technological and traditional approaches to meet your training and education needs.

Technology has provided trainers and educators with a vast new toolkit – but one size does not fit all!

So what is the best approach for your organisation:



- Face-to-face or on-line delivery ?
- Paper-based resources ?
- Multi-media ?
- Technology-enabled training ?
- Learning Management Systems ?

“You don't have to choose!”

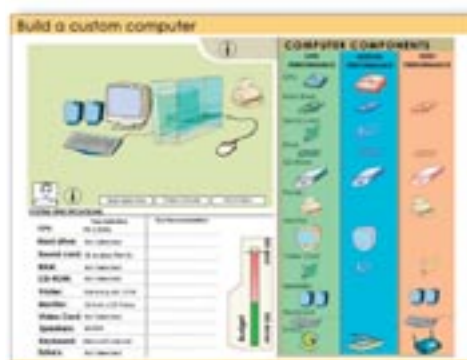
Uni-u can help you design an approach to training and education that effectively delivers learning outcomes based on the right tools for the job.

Product Training



Software training developed for Global-Health's **e-PAS**

Interactive Challenges



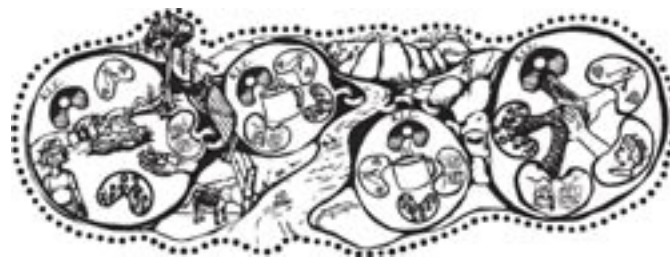
Interactive challenge to 'build a PC' to budget and specifications

What are the benefits ?

In a corporate environment, employees can be trained at the desktop, with personalised training materials and instant feedback. An Anytime, Anywhere approach to training, combined with bite-sized learning modules means that learners can pace themselves through a training program.

Benefits include:

- Learning flexibility: Anywhere, Anytime; the ability to fill idle time with bites of training; Reduced need to remove staff from the work environment for training.
- Real-World engagement: Virtual environments can provide experiences beyond those available at a real site, at a fraction of the cost.
- Progress Tracking: Monitor the learning process, assess learner progress and identify areas of need; Maintain a centralised map of organisational competencies.
- Learner Profiling: Customise programs of study for the learner; Avoid wasting time on topics the learner already knows; Maintain learner interest.
- Competitive Advantage: Do your competitors support their products or provide their staff with flexible training?



Indigenous Communications

Services

Uni-u's core business is the design, development and delivery of blended education and training resources and tools. However, in order to assist clients with innovative approaches to learning, Uni-u provides a comprehensive range of services including:

- Consulting services in on-line learning strategy, planning, design and implementation;
- Development of on-line education and training products (traditional and multimedia courseware, virtual learning tools and interactive learning resources);
- Transition of current materials to on-line environments;
- Professional development/staff training in on-line education;
- Hosting and administration of learning systems;
- E-Learning infrastructure planning and integration; and
- Communications and training resources for indigenous people.

Virtual Walkthroughs



On-line interactive virtual site visit of a corporate IT installation

Online Education Games



Collaborative on-line interactive challenge for university students

Our Approach

Rather than simply replacing traditional education/training courses with on-line versions, organisations are realising that a blend of online and face-to-face delivery can greatly improve learning outcomes. A key success factor in our approach to e-Learning solutions for our clients is the use of our Six "Rs"

Reach - Ensuring the solution enables trainers/instructors to "Reach" a dispersed or unique community of learners.

Re-use - Designing resources for maximum re-use saves on development costs, minimises storage and management requirements and permits new programs to be quickly built on the basis of modular components.

Re-structure - E-Learning allows the organisation to re-structure training content and present in a "learner-centred" way allowing learners of varying skills, interests and abilities to learn at their own pace, at a time that best suits them, on an "as needs" or "just-in-time" basis.

EnRichment - Provide engaging, interactive learning resources that catch and hold the learner's attention and caters for their various learning styles, levels of skill and interest.

ROI - Comes through the effectiveness and efficiency of employee learning and resultant savings enjoyed in the work-place (i.e. more accurate data, fewer mechanical break-downs, better occupational health and safety record) by having effectively trained personnel.

Reward - The 'results orientation' of e-Learning allows trainers/instructors to see their success and enjoy the job satisfaction that follows. For trainees/students, the learner-centred nature of the training allows them to take control of their learning in a way that is far more satisfying than scheduled class-room, trainer-centred approaches. This turns training from a chore to a manageable personal challenge that can be tied to performance reviews and career advancement.

About Uni-u

Uni-u International Pty Ltd is an established provider of products and services in education and training throughout Australia and South East Asia. These products and services are typically delivered as an alliance partner with client universities, professional associations and corporations.

Uni-u's senior management team has significant on-line education and training experience encapsulating extensive domain knowledge and practical experience in planning, designing and developing learning resources and systems in a variety of settings. The company operates with a small core team supplemented by specialist consultants who are engaged on a project-by-project basis. Under this modus operandi, overheads are minimised and flexibility and client value are maximised.

Uni-u has a history of delivering innovative and diverse materials for clients such as the University of Notre Dame Australia, Argyle Diamonds, Global-Health, the City University of Hong Kong and the Open University of Hong Kong. Locally, Uni-u is the preferred supplier of online learning content and associated delivery and management tools for the University of Notre Dame Australia.

Contact Us



e-mail: ceo@uni-u.com
Web: www.uni-u.com

Level 10, Parmelia House
191 St Georges Terrace
Perth, Western Australia 6000
t +61 8 9213 2720
f +61 8 9322 4439

Level 11, 607 Bourke St.
Melbourne, Victoria 3000
Australia.

